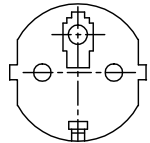
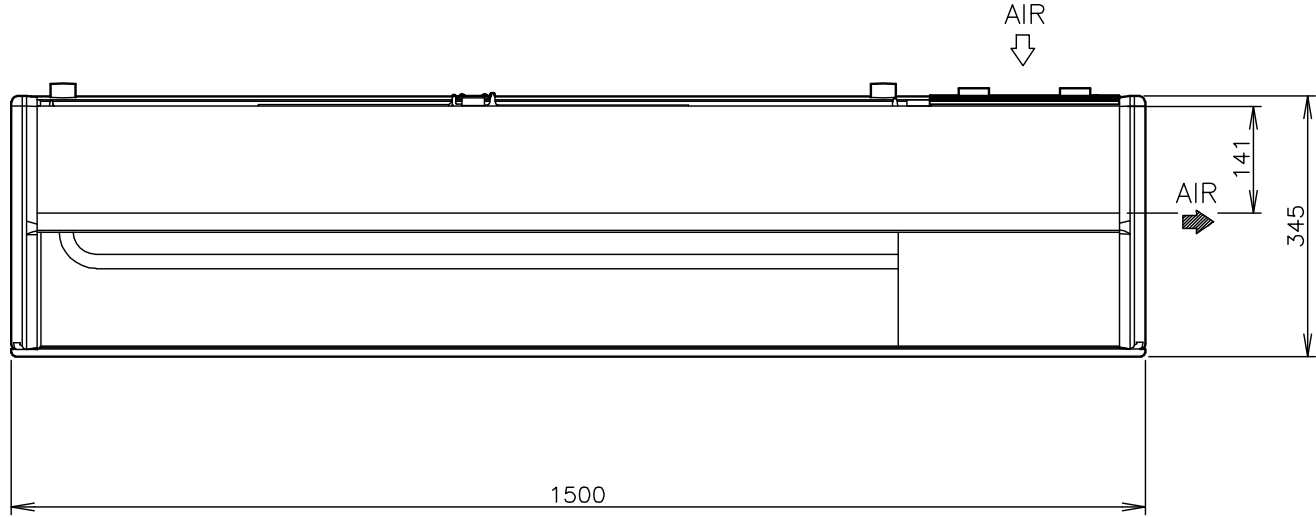
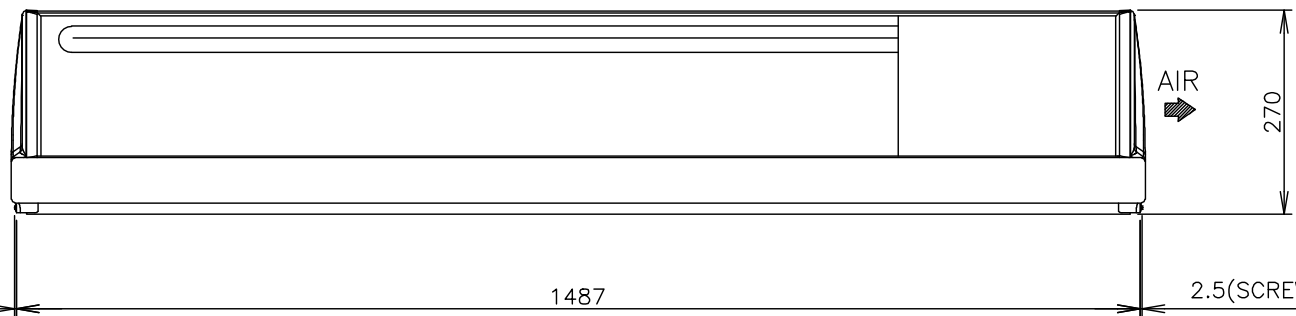


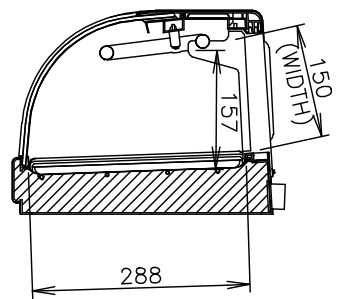
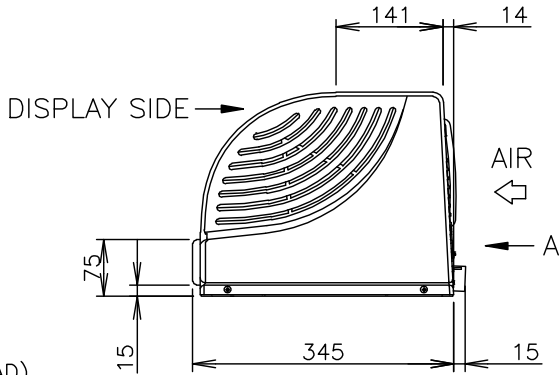
VIEW A(REAR)



PLUG SHAPE



(DISPLAY SIDE)



SECTIONAL SIDE VIEW

ITEM	Hoshizaki Counter Showcase
MODEL	HNC-150BE-R-B
POWER SUPPLY	1 Phase 220-240V 50Hz Capacity: 0.67kVA (2.8A)
AMPERAGE	Rated: 1.1A Starting: 10A
ELECTRIC CONSUMPTION	150W (Power Factor: 55%)
HEAT REJECTION	360W
POWER CORD	2.4m
EFFECTIVE CAPACITY	57L
OUTSIDE DIMENSIONS	1500mm(W) x 345mm(D) x 270mm(H)
INSIDE DIMENSIONS	1145mm(W) x 288mm(D)[Floor] x 157mm(H)
EXTERIOR	Clear Glass, ABS Plastic, PVC Plastic
INTERIOR	Clear Glass, ABS Plastic, Stainless Steel
DOOR	Sliding Glass x 4 [293mm(W) x 172mm(H)]
REFRIGERATION SYSTEM	Convection Cooling
DEFROST SYSTEM	N/A
COMPRESSOR	Hermetic 100W
CONDENSER	Fin and Tube type (7 tubes high 2 rows deep) Cooling Fan Motor provided
EVAPORATOR	(Upper) Tube Type, (Lower) Pipe on Sheet Type
REFRIGERANT	R134a
ELECTRICAL CIRCUIT PROTECTION	Earth Leakage Circuit Breaker 15A, Earth Wire
COMPRESSOR PROTECTION	Motor Protector
WEIGHT	Net: 37g (Gross: 52kg)
PACKAGE	Carton (Wooden Pallet) 1580mm(W)x415mm(D)x517mm(H)
ACCESSORIES	Food Mount x 4, Joint x 2, Drain Hose x 1
OPERATING CONDITIONS	Ambient Temperature: 10 - 30° C Voltage Range: Rated Voltage ±10%

1. Install the sushi case properly in accordance with the instructions on location, water supply/drain connections and electrical connections stated in the instruction manual provided. Allow 10mm extra space at the installation site to meet any installation requirements (additional spacing is also required for proper air flow and water connections).
2. Relative humidity exceeding 60% may result in excessive condensation on the exterior.
3. The food temperature is controllable by turning over the food mounts.

# HOSHIZAKI COUNTER SHOWCASE HNC-150BE-R-B

DESIGNED	DRAWN	SCALE	1/10	TRIGONOMETRY
****	DATE	2010.01.12	DRAWING NO.	SYMBOL
DATE			D06142	

この図面は印刷の都合上、尺度が正しく再現されていません。