



# WFP16SCD

## 4-Quart LiquiLock® Seal System Combination Bowl Cutter Mixer and Continuous-Feed Food Processor with Dicing



**DICING INCLUDED!**

### MAIN FEATURES

- 4-quart, virtually unbreakable, clear-view cutter mixer bowl
- LiquiLock® Seal System prevents leaks, splashes, and spills
- 2 HP\* commercial motor with thermal overload protection
- Heavy-duty, die-cast housing with solid base
- Large, easy-to-read control buttons
- PULSE feature fine-tunes food processing and breaks down heavy loads
- Over 20 processing options in one machine
- Unique batch bowl processing for optimal efficiency
- Shred, grate and slice directly in the batch bowl with the included disc stem
- Extra-large feed chute with small and large food pusher
- Continuous-feed chute for large-volume slicing, dicing and shredding
- Safety interlock system prevents unit from operating unless correctly assembled
- Includes 3/8" (10mm) dicing grid and slicing disc with punch tool for dicing grid
- Limited Five-Year Motor and Two-Year Parts and Labor

### ELECTRICAL

Voltage: 120

Frequency: 60Hz

Amps: 6

Plug Type: 5-15

Cord Length: 5 feet



### SALES FEATURES

Completely sealed for use with liquids, now you can use your WFP16SCD combination bowl cutter mixer and continuous-feed food processor for more than dry food prep! High-impact, virtually unbreakable and scratch-resistant polycarbonate lets you see into the bowl. Lighter than metal, but built for tough use. Rugged, black polycarbonate hopper is scratch resistant. Durable see-through cover provides clear view while processing.



@waringcommercial

©2023 Waring Commercial  
314 Ella T. Grasso Avenue, Torrington, CT 06790  
Tel. 800-492-7464 • Fax 860-496-9008

[waringcommercialproducts.com](http://waringcommercialproducts.com)

4-Quart LiquiLock® Seal System Combination Bowl Cutter Mixer and Continuous-Feed Food Processor with Dicing WFP16SCD



# 4-Quart LiquiLock® Seal System Combination Bowl Cutter Mixer and Continuous-Feed Food Processor with Dicing WFP16SCD

## PARTS AND ACCESSORIES (INCLUDED)



**WFP16S1**  
Sealed LiquiLock® S-Blade (Patented)



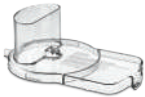
**WFP16S2**  
4 Qt. Cutter Mixer Bowl Sealed LiquiLock®



**WFP16S3A**  
4 Qt. Cutter Mixer Bowl Lid Sealed LiquiLock®



**WFP16S4**  
Continuous Feed Hopper



**WFP16S5**  
Continuous Feed Hopper Lid



**WFP16S6**  
Large Pusher for Hopper



**WFP16S7**  
Small Pusher for Hopper



**WFP16S8**  
Ejection Plate Slinger  
(component of continuous feed hopper)



**WFP16S9**  
New Disc Stem for WFP16S10, WFP16S12A



**WFP16S10**  
Adjustable Slicing Disc (Patented)



**WFP16S11**  
Sealed Whipping Disc



**WFP16S12A**  
Double-Sided Shredding Disc



**WFP16S26X**  
3/8" (10mm) Dicing Grid and Slicing Disc  
with Punch Tool for Dicing Grid

## PARTS AND ACCESSORIES (OPTIONAL)



**WFP16S16**  
Grating Disc



**WFP16S18**  
Continuous Feed Hopper, Lid Assembly  
with Slinger & Dicing Assembly



**WFP16S19**  
5/16" (8mm) Punch Tool for Dicing Grid



**WFP16S20**  
3/8" (10mm) Punch Tool for Dicing Grid



**WFP16S21**  
1/2" (12mm) Punch Tool for Dicing Grid



**WFP16S22**  
5/32" (4mm) Julienne Disc



**WFP16S23**  
6.5mm Julienne Disc



**WFP16S24**  
5/16" (8mm) Julienne Disc



**WFP16S25**  
5/16" (8mm) Dicing Grid and Slicing Disc  
with Punch Tool for Dicing Grid



**WFP16S26**  
3/8" (10mm) Dicing Grid and Slicing Disc  
with Punch Tool for Dicing Grid



**WFP16S27**  
1/2" (12mm) Dicing Grid and Slicing Disc  
with Punch Tool for Dicing Grid



**WFP16S28**  
Removable Gasket for 4-Qt.  
Cutter Mixer Bowl Lid WFP16S3A



@waringcommercial

©2023 Waring Commercial  
314 Ella T. Grasso Avenue, Torrington, CT 06790  
Tel. 800-492-7464 • Fax 860-496-9008

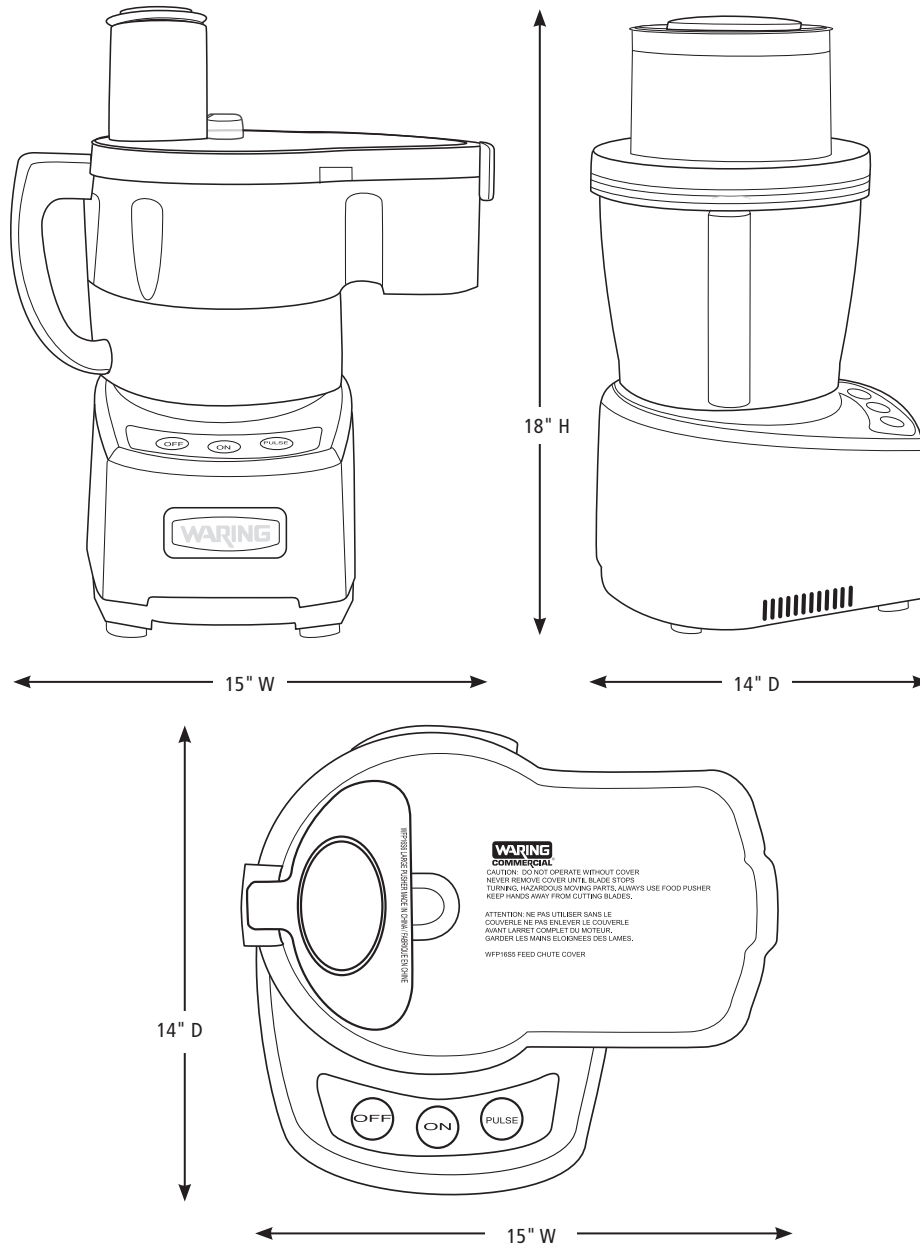
waringcommercialproducts.com

23WC080282 / REV 09/23



# 4-Quart LiquiLock® Seal System Combination Bowl Cutter Mixer and Continuous-Feed Food Processor with Dicing WFP16SCD

## DIMENSIONS



Out of Box Weight: 22.8 lb.

ORDERING INFORMATION	#STD. PKG.	GIFTBOX WEIGHT	CUBIC FEET	BOX DIMENSIONS D X W X H	UPC	CASE PKG.	MC WEIGHT	MC DIMENSIONS D X W X H	MBC
WFP16SCD – 4-Quart LiquiLock® Seal System Combination Bowl Cutter Mixer and Continuous-Feed Food Processor with Dicing	1	35.5	4.13	15.25" x 21.625" x 21.625"	040072023262	1	35.5	22.125" x 15.75" x 22.375"	10040072023269



@waringcommercial

©2023 Waring Commercial  
314 Ella T. Grasso Avenue, Torrington, CT 06790  
Tel. 800-492-7464 • Fax 860-496-9008

waringcommercialproducts.com

23WC080282 / REV 09/23